

**Flow Indicator Totalizer**  
**Model No. : FT-10**

**POUSHALI ELECTRONICS**

**P/11A, Second Street,  
Modern Park  
Kolkata – 700 075  
Ph No : 2416 1320/2259,  
Mobile: 9432249938  
E-mail: [info@poushalielectronics.com](mailto:info@poushalielectronics.com)  
[subrata.sd@rediffmail.com](mailto:subrata.sd@rediffmail.com)  
Website: [www.poushalielectronics.com](http://www.poushalielectronics.com)**

**INTRODUCTION:**

The Poushali Electronics make Flow Indicator has been designed to measure and display the value of flow from process and totalized.

The Instrument is front panel mounting type and hazard free in operation. It is designed in three no. of basic cards, namely 'Main Card', 'Power and Output Card' and 'Display Card'.

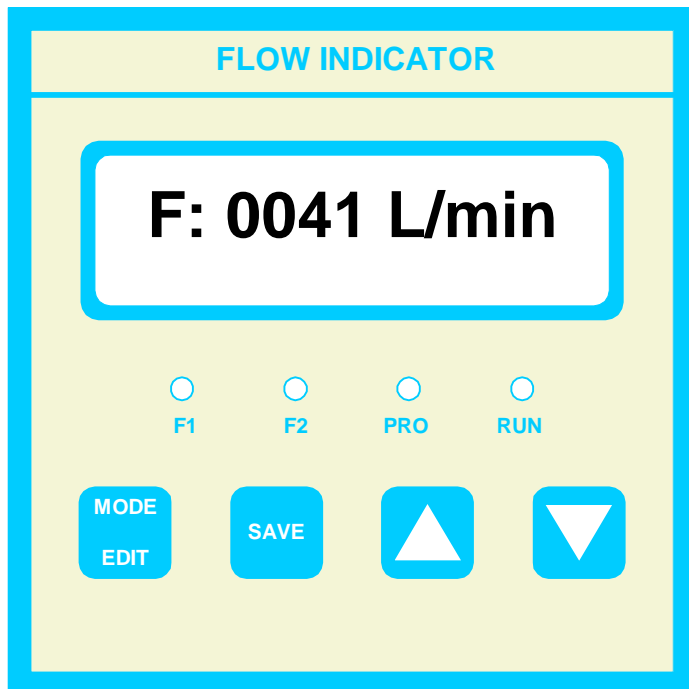
The micro controller based instrument is having a two line back lit LCD Display and four touch keys for programming and control indication along with LEDs as describe bellow.

**KEYs:**

- 1) MODE / EDIT KEY
- 2) SAVE KEY
- 3) UP KEY
- 4) DOWN KEY

**LEDs:**

- 1) RUN - RUN LED will glow at run mode.
- 2) PRO - PROGRAM LED will glow at programming mode.

**OPERATION:**

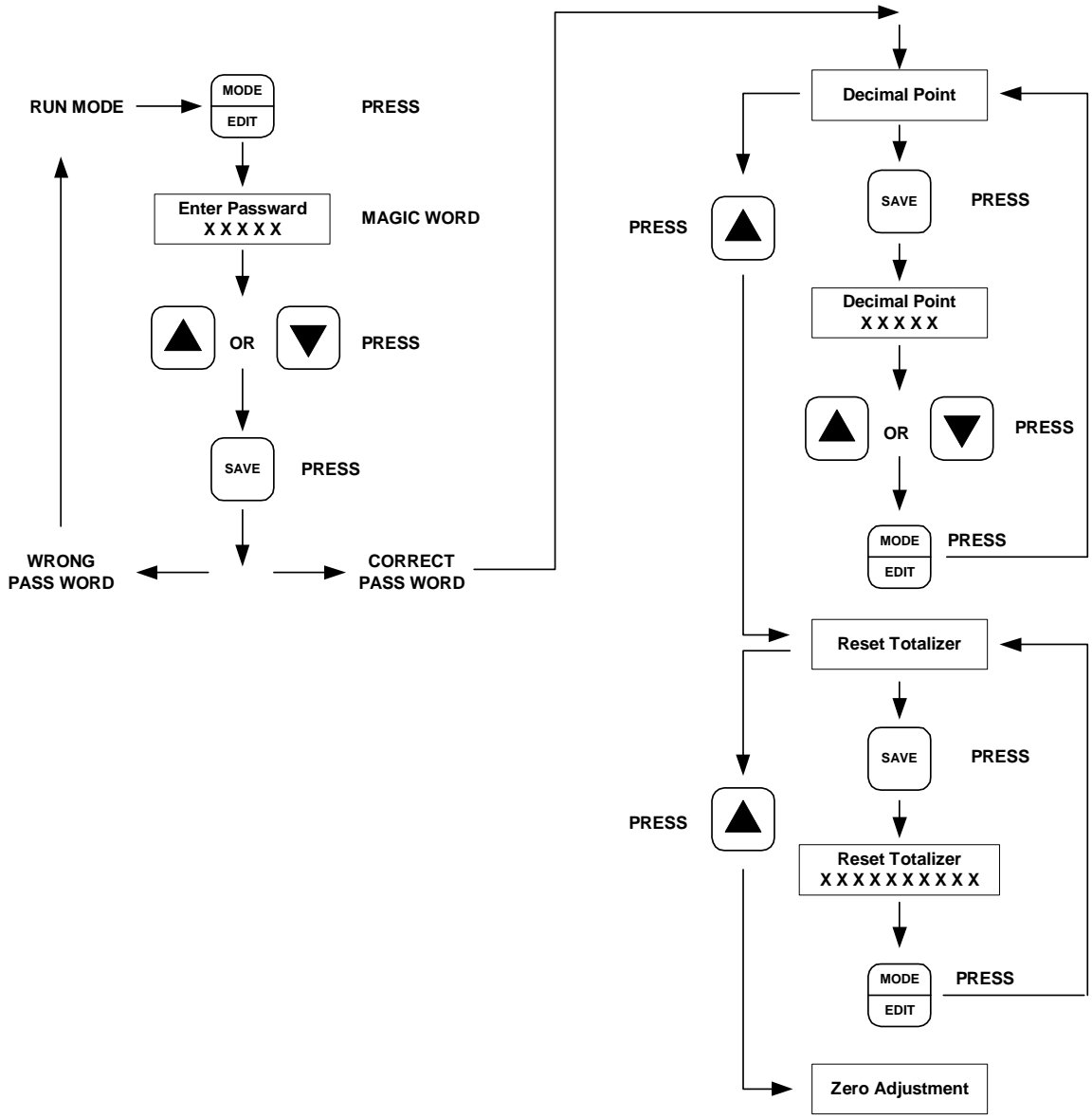
There are two modes of operation, one is "EDIT" (Supervisory Mode) and another is "RUN" mode, where user can run the program from the existing table.

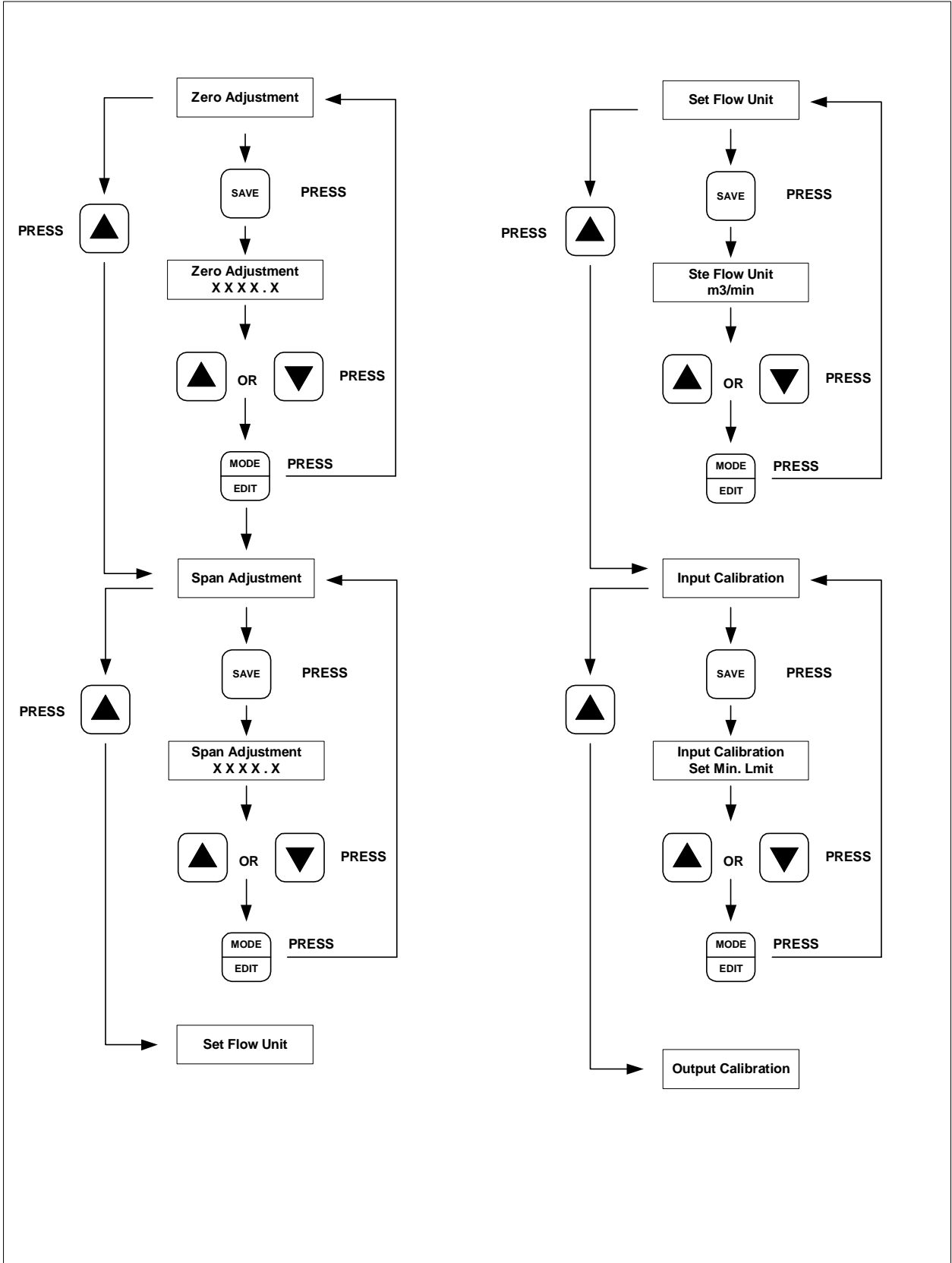
**EDIT Mode:**

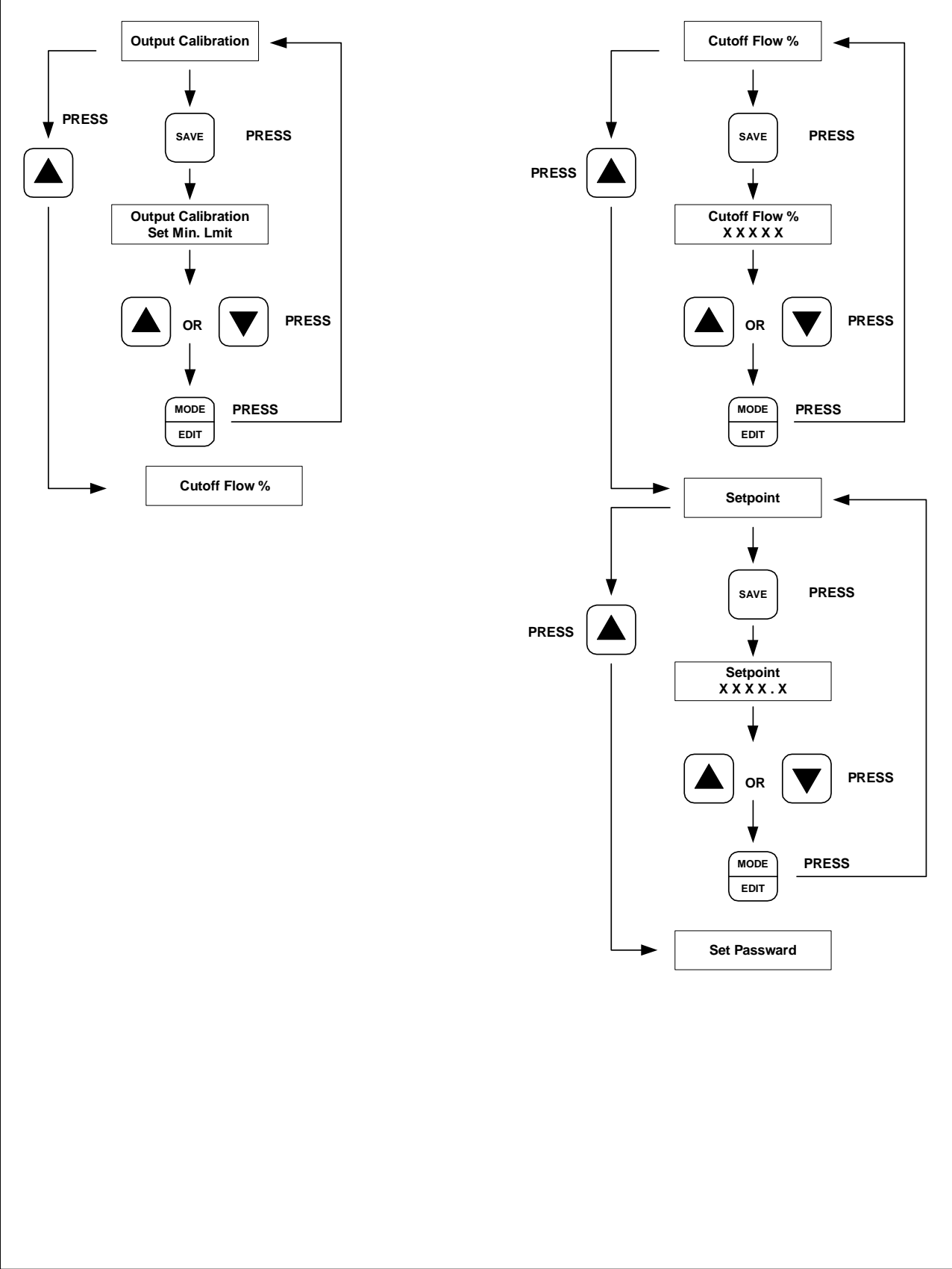
Note: after entering the edit mode, "UP" key and "DOWN" key are both active to go to forward menu or previous menu.

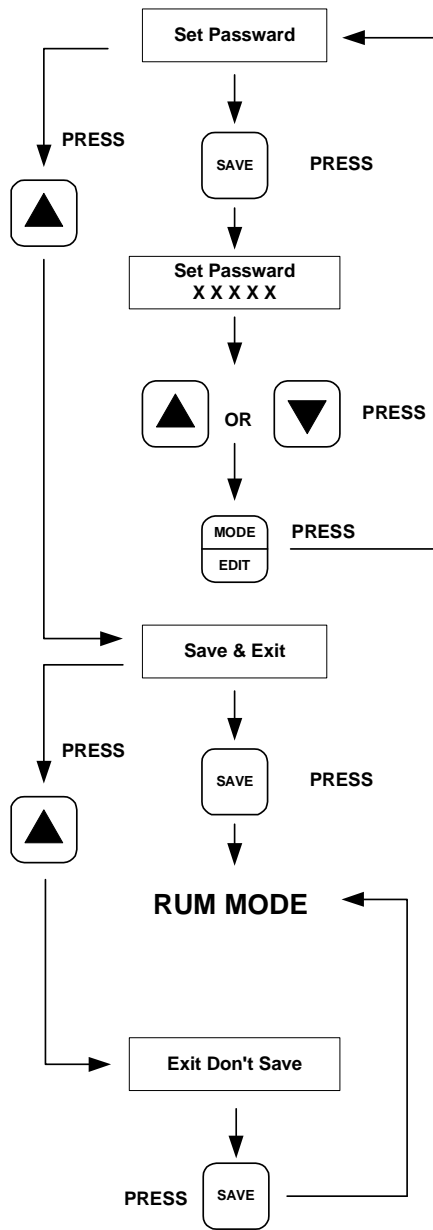
Edit menu is given bellow

**PROGRAM MODE**









**TERMINAL DRAWING**

1	2	3	4	5	6	7	8	9
E	N	L	NC	C	NO			
POWER 230V AC			RELAY OUTPUT					
SL No. -								
MODEL No - FT / T-10								
MANUFACTURED BY POUSHALI ELECTRONICS								
			4-20mA OUTPUT		4-20mA INPUT FROM SENSOR			
			+	-	FS -	FS +	IN+	
10	11	12	13	14	15	16	17	18

## **IMPORTANT NOTE:**

**If any parameter has been changed always exit through “SAVE & EXIT” mode.**

## **RUN Mode:**

With the ‘Power ON’ Instrument will go to “Run Mode’ and it starts to show the measured process flow value and totalized flow.

## **SAFETY MEASURES:**

Enclosure IP54.

## **FAULT Finding:**

- 1) No Power : Check the 230V AC supply
  - 2) Display “000.00” : Check input Sensor
  - 3) **For other Faults : Consult Factory**
-